

R-EFS-0602-90-GO-250

8-Port Outdoor Gigabit Switch PoE++



Accessories

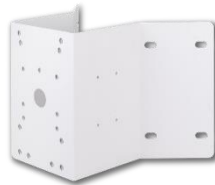
R-PMA



R-RPMA



R-CMA



Technical Specification

Networking Specifications

Total Gigabit Ports	8
Gigabit PoE Ports (10M/100M/1G)	4 x 90W PoE
30W IEEE802.3 at Power over Ethernet	Support
90W IEEE802.3 bt Power over Ethernet	Support
SFP Slots (1G)	2
Gigabit Ports (RJ45)	2
Forwarding Capacity	11.904Mpps
Mac Table	8K
Jumbo Frames	9,216 Bytes
Switching Capacity	16 Gbps

Power Specifications

Input Voltage	100VAC ~ 240VAC 280VAC 4Hr 300VAC 1min.
Backup Power Input Voltage	48VDC ~ 56VDC
Output Voltage Range /per PoE Port	54 VDC PoE IEEE 802.3af (Max. 15.4W) output PoE+ IEEE802.3at (Max. 30W) output bt PoE (Max. 60W/90W) output
PSE Power Pin Assignment	12(-),36(+),45(+),78(-)
PoE Surge Protection	6KV
AC Power Surge Protection	40KV

Switch power consumption (without PoE)	5W
Power Budget	250W

Mechanical Specifications

Dimensions (L x W x H)	315.4 x 245.8 x 118mm
Weight	3.71KG
Connectors	PF 3/4" conduit cable gland x1pc M25 cable gland with 5x5mm holes x1pc M16 cable gland 1x6.5mm hole x4pc

Environmental Specifications

Weather Rating	IP67
Vandal Proof	IK10
Operating Temperature	-40°C ~ 65°C
Storage Temperature	-40°C ~ 85°C
Operating Humidity	5% ~ 95% non-condensing

Certifications

EMC	CE, FCC, VCCI, C-Tick Class A
Safety	EN62368-1
Surge	EN61000-4-5